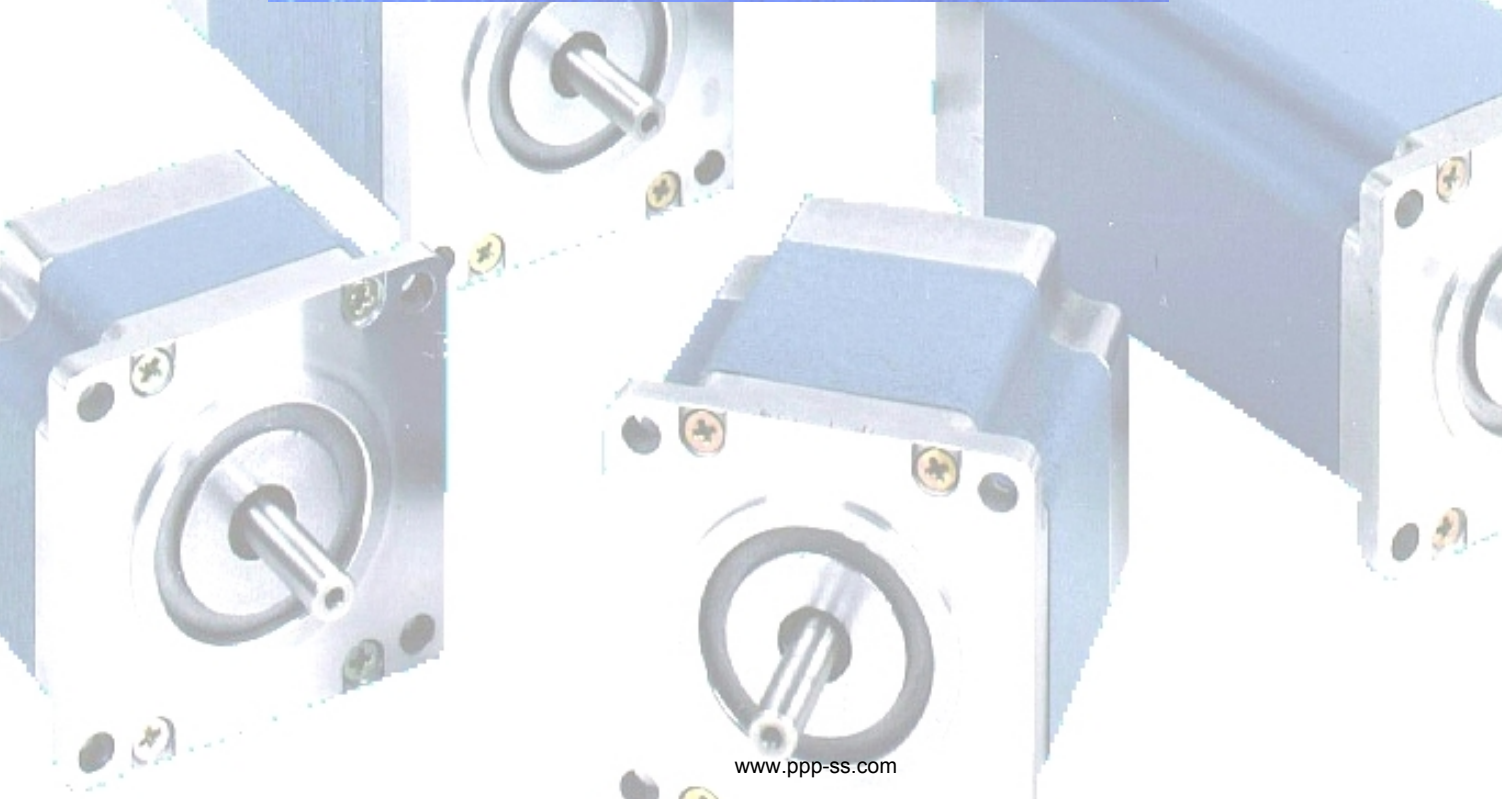


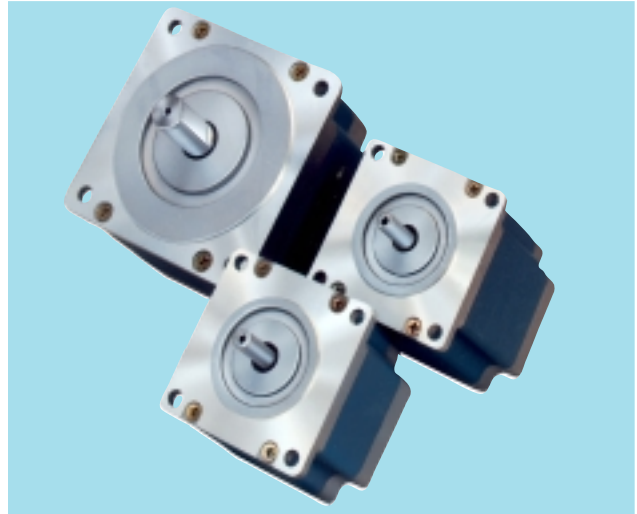
**SLO-SYN®  
KM SERIES HIGH TORQUE STEP MOTORS**





Superior Electric SLO-SYN — long recognized as the leader in step motor technology, has achieved new levels of performance with its high energy KM Series of stepping motors.

Utilizing the latest in design and magnetic technologies, KM Series motors produce double the torque of their predecessors. This achievement allows the user to reduce the size and weight of the motor, increase system performance, improve productivity and reduce cost.



The KM Series is available with a variety of windings and is compatible with nearly all available step motor drives. Specific winding configurations provide a perfect match to Superior's full, half, and micro step drive packages.

Produced in an ISO9001 environment, these high technology steppers are backed with the quality and reliability of a company known for performance and value since 1938.

**Mounting Holes For Encoder in Rear Endbell, Ground Screw Included**

**Brushless Robust Design**

**Rugged Square-Frame Construction**

**Permanent Magnet Rotor**

**303 Stainless Steel Shaft**

**Double Shielded Ball Bearings**





