



บริษัท พีพีพี เซลส์ แอนด์ เซอร์วิส จำกัด

PPP SALES AND SERVICE LTD.

99/100 หมู่บ้านพาร์คเวย์โฮม ซอย ราษฎร์พัฒนา 22 ถนนราษฎร์พัฒนา แขวง/เขตสะพานสูง กทม 10240

Tel / Fax : 02 7290826 , www.ppp-ss.com

EOCR-SSD

Digital Type Standard Over-current Relay with Ammeter

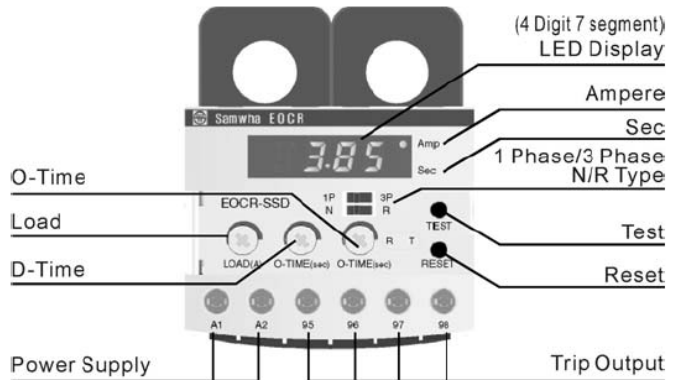
Introduction

• Protection functions

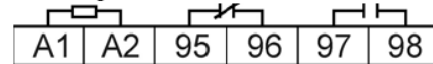
Protection	Operation time	Condition
Overcurrent	Preset O-Time	
Phase-loss	In 3 sec	
Locked Rotor	Within 0.5sec after preset D-time elapsed	In case that OC keeps more than 200% after D-time elapsed

- Over-current range: 05Type : 0.5~6A
30Type : 3A~30A
60Type : 10A~60A
- Indicates Trip cause
- manual(instant)/ electrical(remote) Reset
- Single phase(1P) / Three phase(3P) Selectable
- Relay Output selectable – Fail safe(N) / Non-fail safe(R)

Feature



※ Terminal Diagram



Typical Diagram

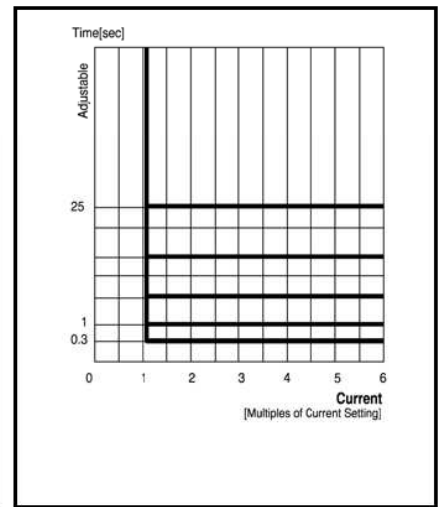
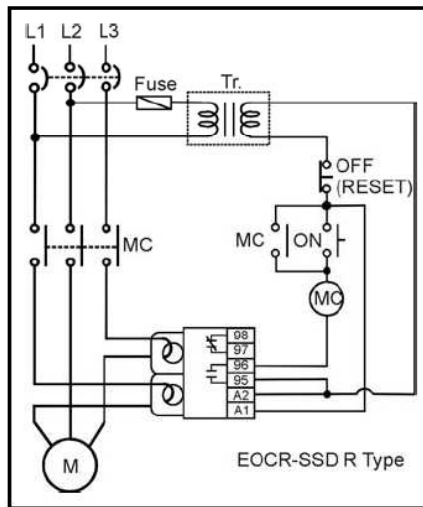
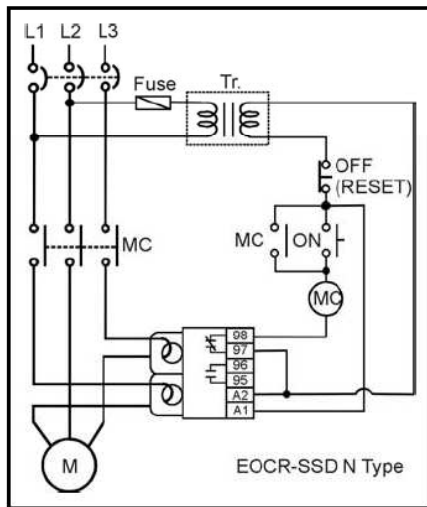
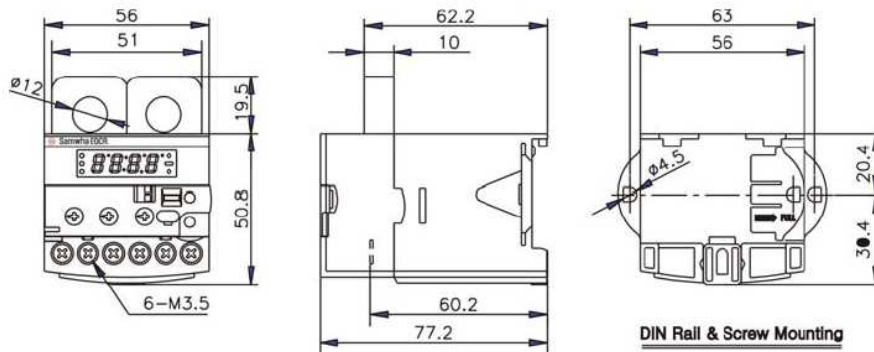


표1 Definite-Time Characteristic of OC

Dimension





บริษัท พีพีพี เซลส์ แอนด์ เซอร์วิส จำกัด

PPP SALES AND SERVICE LTD.

99/100 หมู่บ้านพาร์คเวย์โฮม ซอย ราษฎร์พัฒนา 22 ถนนราษฎร์พัฒนา แขวง/เขตสะพานสูง กทม 10240

Tel / Fax : 02 7290826 , www.ppp-ss.com

■ Specification

Current Setting range	Over-current	05	0.5~6A			
		30	3~30A			
		60	10~60A			
	Starting Delay time	D-time	1~30sec			
	Operating Delay time	O-time	0.5/1~10sec			
Reset			Manual (instant) / electrical Reset			
Operating time Characteristic	Over current		Definite time			
Tolerance			Current	±5%	Time	±0.2sec
Environment	Temperature	Operation	-20℃~60℃			
		Storage	-30℃~80℃			
	Humidity		30~85% RH Non-Condensing			
Power supply			<ul style="list-style-type: none"> • 220 : 220VAC±15%, 50/60Hz • 110 : 110VAC±15%, 50/60Hz • 24 : 24VAC/DC 			
Output Relay	2-SPST(1a1b)		3A/250VAC, Resistive			
Insulation	Between casing and circuit		10MΩ, 500VDC			
Dielectric Strength	Between Casing & Circuits		2.0kV 60Hz, 1min			
	Between Contacts		1.0kV 60Hz, 1min			
	Between Circuits		2.0kV 60Hz, 1min			
Mounting			35mm Din Rail 또는 Panel			
Power Consumption			Less than 3W			
Electrostatic Discharge	IEC61000-4-2		Level 3 : Air Discharge : ±8kV, Contact Discharge : ±6kV			
Radiated Electromagnetic Field Disturbance	IEC61000-4-3		Level 3 : 10V/m, 150MHz & 450MHz Portable transceiver			
EFT/Burst	IEC61000-4-4		Level 3 : ±2kV, 1min			
Surge	IEC61000-4-5		Level 3 : 1.2X50μs, ±4kV(0°,90°,180°,270°)			
1MHz Burst disturbance	IEC61000-4-12		Level 3 : 2.5kV, 1MHz			
Conducted Emission	IEC60255-25		Class A (Conducted & Radiated)			

■ Trip display

Trip Cause	LED Indication	Description
Over Current		Tripped after sensing over-current 10A during operation.
Phase Loss		Phase loss of L1(R)
		Phase loss of L2(S)
		Phase loss of L3(T)
Locked Rotor		Tripped after sensing Locked Rotor during starting.



บริษัท พีพีพี เซลส์ แอนด์ เซอร์วิส จำกัด
PPP SALES AND SERVICE LTD.

99/100 หมู่บ้านพาร์คเวย์โฮม ซอย ราษฎร์พัฒนา 22 ถนนราษฎร์พัฒนา แขวง/เขตสะพานสูง กทม 10240
 Tel / Fax : 02 7290826 , www.ppp-ss.com

■ How to set

Please set before motor starting as stated below:-

- 1) Over-current : Set the rated motor current of its name plate . For protection of connected machinery with motor, it is recommended to set the 110~115% of real running current after motor current is stabilized.
- 2) Starting Delay Time : Set the expected run-up time of motor by D-time Knob
- 3) Operating Time : Set trip delay time(O-time knob) to desired trip time.

Order	Item	Setting range	FND	비 고
1	Over-current Setting	05 Type : 0.5A~6A 30 Type : 3~30A 60 Type : 10A~60A		<ul style="list-style-type: none"> · Able to set current, preset, operating 0.5A. · 0.5~6A : set by step of 0.1A, · 3~30A : set by step of 1A · 10~60A : set by step of 1A
2	Starting delay time Setting	0.5 ~ 30 sec		
3	Operating Time delay Setting	0.5 ~ 30 sec		
4	TEST	Display END after elapsing 3sec+preset O-time	3 sec+preset O-Time Cannot do a test during driving.	